

SEED+GRAPHITE®

MULTI-BENEFIT TALC+GRAPHITE SEED LUBRICANT

Ensures the maximum population of your seeds emerge and are on a high-yield growth trajectory even in stressful conditions.



NO EXTRA STEPS

Proven multi-benefit talc/graphite seed lubricant is easy to add at the seed tender or planter box.



THE ULTIMATE CROP INSURANCE

Exclusive biostimulant MAC Tech® directly mitigates for abiotic stressors, and primes your seed investment to power through cold stress, excess moisture, heat/UV, and drought.

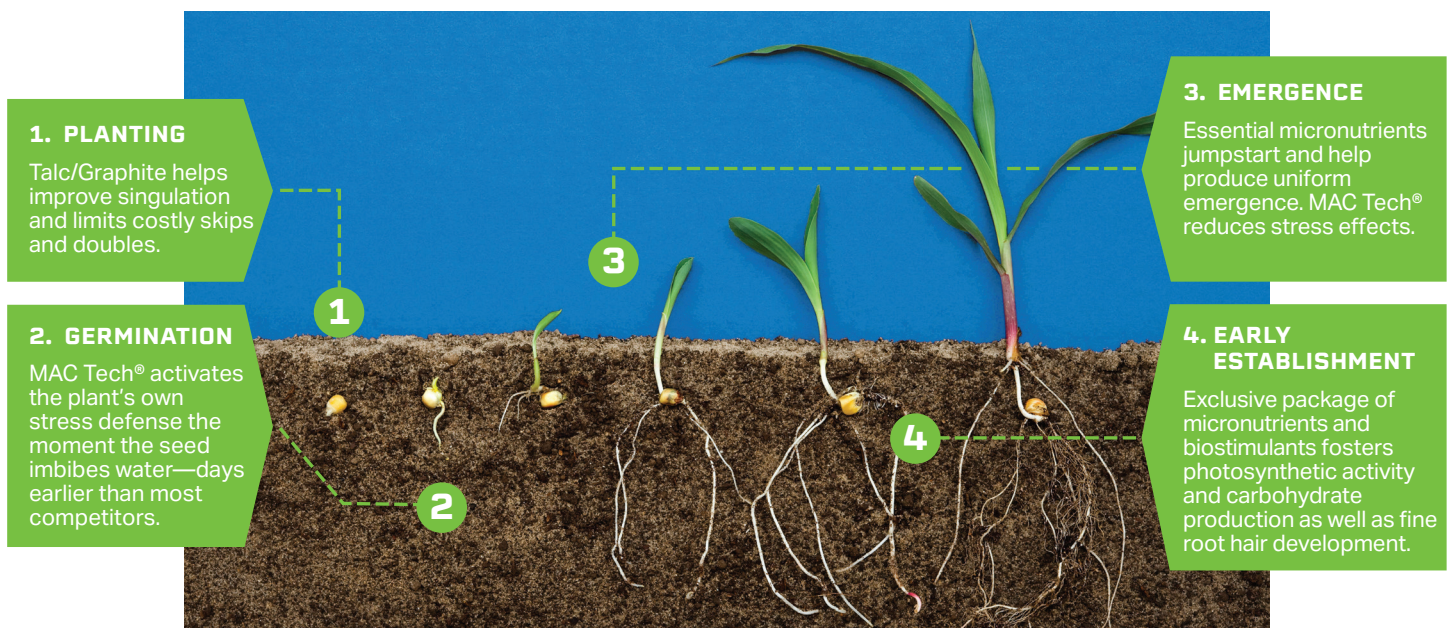


PROVEN RETURN ON INVESTMENT

A profitable choice with a low cost per acre and a 3.5 bushel on average increase in corn and 2 in soybeans.¹

BUILT FOR THE MOMENTS THAT DECIDE YOUR SEASON.

Planting, germination, emergence and early establishment are the ultimate stress tests. SEED+GRAPHITE helps every step of the way.



SCAN TO LEARN MORE
OR Contact your Verdesian Account Manager.

VLSCI.COM



SEE THE RESULTS, AND PROVEN PERFORMANCE IN THE FIELD

SEED+GRAPHITE®



Aurora, NE in 2019, Seed+Dry, equivalent formulation to Seed+Graphite



May 2025, Calloway County, KY

ACCELERATES UNIFORM EMERGENCE

Uniform emergence is critical for the highest yields in corn, and SEED+GRAPHITE helps ensure higher population percentages and faster emergence.

+3.5 bu/A yield advantage on corn with proven ROI across 52 sites¹

ACCELERATES CANOPY CLOSURE

SEED+GRAPHITE reduces the time required for soybean canopy closure resulting in reduced weed pressure, better moisture conservation and improved nutrient cycling.

+2 bu/A yield advantage on soybeans with proven ROI across 19 sites¹

SEED+GRAPHITE is a dry powder formulation conveniently applied directly to seeds in the planter box at the time of planting or can be added at a seed treater. Apply SEED+GRAPHITE the same way you apply seed lubricants—no new planting equipment needed.

RECOMMENDED APPLICATION RATES

CROP	oz per 100 lb seed	kg per 100 kg seed
Alfalfa	4	0.25
Barley, oats, rye	4	0.25
Corn	8	0.50
Cotton	12	0.75
Milo, millets, sorghum	10	0.625
Peanuts	4	0.25
Rice	4	0.25
Soybeans	4	0.25
Sugar Beets	8	0.50
Sunflowers	4	0.25
Wheat	4	0.25

For crops not listed, consult your dealer/distributor.

GUARANTEED ANALYSIS

Calcium (Ca) 4.0%

Iron (Fe) 1.0%
1.0% Water Soluble Iron (Fe)

Sulfur (S) 5.0%
5.0% Combined Sulfur (S)

Manganese (Mn) 0.70%
0.70% Water Soluble Manganese (Mn)

Cobalt (Co) 0.070%

Molybdenum (Mo) 0.080%

Copper (Cu) 0.090%
0.090% Water Soluble Copper (Cu)

Zinc (Zn) 2.0%
2.0% Water Soluble Zinc (Zn)

Derived from Calcium Sulfate, Cobalt Sulfate, Copper Sulfate, Ferrous Sulfate, Manganese Sulfate, Sodium Molybdate, and Zinc Sulfate.

CONTAINS SEED LUBRICANT:

- 25.6% Talc
- 6.4% Graphite
- Talc to Graphite in an 80/20 ratio

¹Multi-year, multi-site data, 2019–2021.

All trademarks (™) and registered trademarks (®) are the property of their respective owners. Data on file. Results may vary based on local environmental conditions. Important: Always read and follow label use directions. © 2026 Verdesian Life Sciences. All rights reserved. VLS 26.0039